

Flat 4 5 York Road, Chorlton, Manchester, M21 9HP

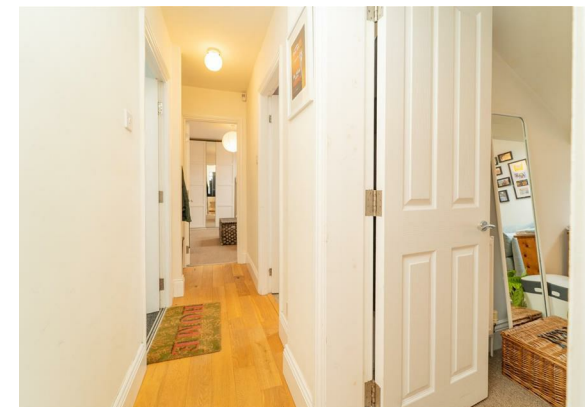


JP&Brimelow
ESTATE AGENTS

Offers In The Region Of £290,000

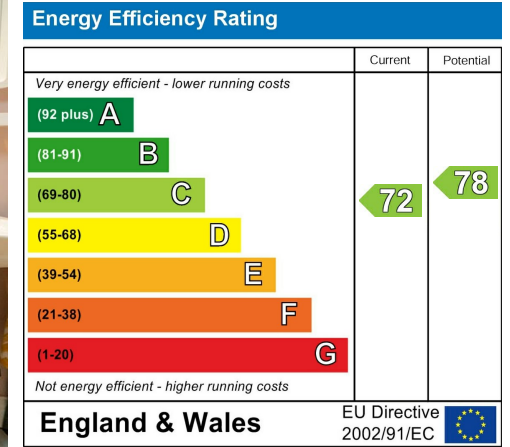


VIDEO TOUR AVAILABLE A stylishly presented TWO DOUBLE BEDROOM top-floor apartment set within an impressive bay-fronted Victorian semi-detached property, ideally located in the heart of Chorlton on a highly sought-after residential road just off Whitelaw Road. Within easy walking distance of both Chorlton town centre and Beech Road, offering a wealth of independent shops, local amenities, Longford Park, and the Wilbraham Road Metrolink providing direct links to the City Centre and MediaCity. The spacious and well-designed accommodation comprises a communal entrance hallway, a private entrance hall, an impressive open-plan lounge/dining area, with a fully fitted kitchen featuring oak flooring, and access to a private balcony with space for a table and chairs, two double bedrooms, and a contemporary four-piece bathroom suite. The property further benefits from gas-fired central heating, a security alarm system, a secure bike shed, and a well-maintained, landscaped communal lawned garden to the rear. Ideally suited to a first-time buyer or a professional couple, thanks to its excellent location.



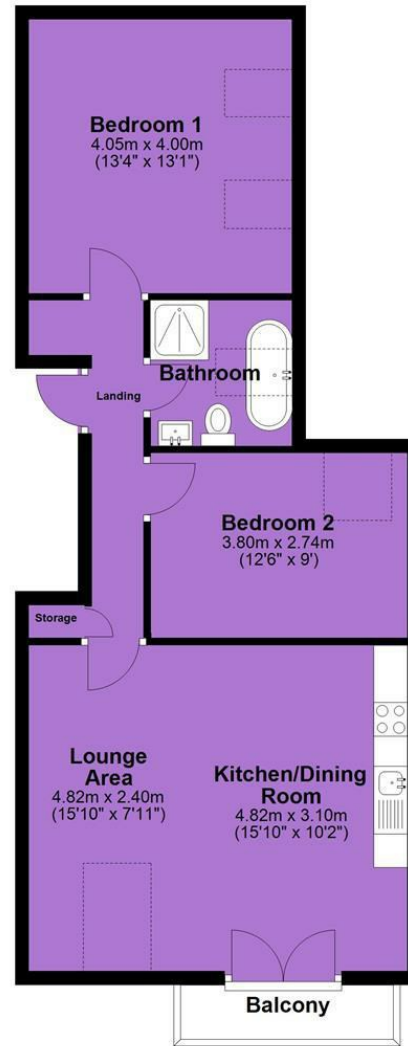


EPC Chart



Tenure: **Leasehold** Council Tax Band: **B**

Second Floor



JP & Brimelow Estate Agents Ltd
430 Barlow Moor Road, Manchester, M21 8AD
Tel: 0161 8822233
E: sales@jpbrimelow.co.uk www.jpandbrimelow.co.uk



JP & Brimelow
ESTATE AGENTS

NOTICE: JP & Brimelow Estate Agents Ltd for themselves and for the vendors or lessors of this property whose agents they are give notice that:

- the particulars are set out as a general outline only for the guidance of intending purchasers or lessees, and do not constitute, nor constitute part of, an offer or contract;
- all descriptions, dimensions, references to the condition and necessary permissions for use and occupation, and other details are given in good faith and are believed to be correct but any intending purchasers or tenants should not rely on them as statements or representations of fact but must satisfy themselves by inspection or otherwise as to the correctness of each of them;
- no person in the employment of JP & Brimelow Estate Agents Ltd has any authority to make or give any representation or warranty whatever in relation to this property.

 [jpandbrimelowstateagents](https://www.instagram.com/jpandbrimelowstateagents)

 [@jpandbrimelow](https://www.twitter.com/jpandbrimelow)